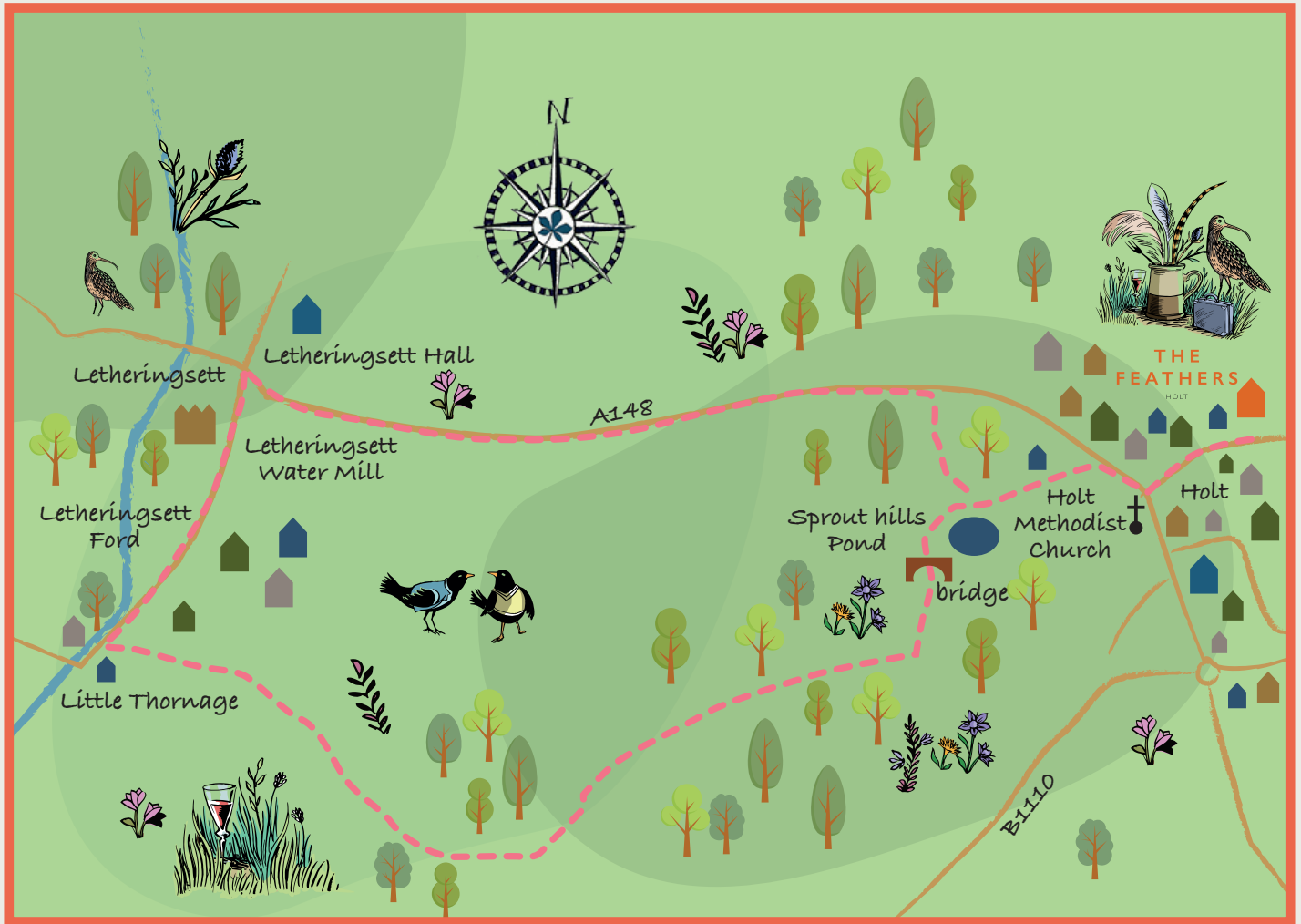


ROUND ROUTE RAMBLE

A scenic walk from The Feathers, Holt



**SPROUT HILLS
TO LETHERINGSETT FORD
1 HOUR ROUND ROUTE
2.7 MILES**

Turning left out of The Feathers, head to the end of the High Street. Reaching Holt Methodist Church turn right onto the A148, stick to the paved roadside then cross over to take the first left through a small car park to the entrance of Sprout Hills.

Pass the pond and cross the stream, heading left up the hill. Descend steep steps onto a tree lined path and turn right.

Tall birch trees line the side of a narrow track that brings you out into open fields.

Turn right when leaving the tree cover, then right again to follow a narrow diagonal path into a small woodland.

Follow the path across an arable field and down to the ford at Letheringsett. From the ford, turn right and head towards the village centre where you'll see the Letheringsett Water Mill on your left. The perfect stop off to grab tea and cake or even to pick up some cupboard staples.

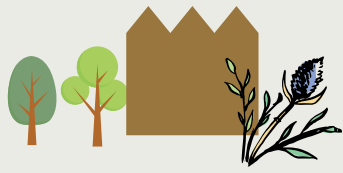
Once fully rested, continue down towards the A148, turn right and

follow the footpath alongside to take you back to Holt. When you reach the car lay-by situated near a cobbled wall, head to the far end of the lay-by and take a right back towards the Sprout Hills Pond and back to The Feathers.



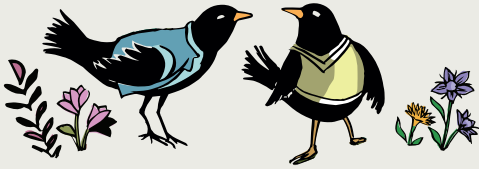
AROUND AND ABOUT

Points of interest along the route



LEATHERINGSETT WATER MILL

Leatheringsett Water Mill was built in 1802 and is the last remaining watermill in Norfolk to produce flour! The latest structure is brick with a black pantiled roof. The 600,000 gallon capacity is capable of driving 4 pairs of stones, two of which are still working.



HOLT OWL TRAIL

The 24 pavement plaques situated along Holt's highstreet were installed in 2017, designed to take you on a historical tour of the quaint Georgian town.

Each location plaque reveals hidden histories and facts about that specific point.

Plaque 2 sits proudly outside The Feathers!

OUR INNS



THE GLOBE INN

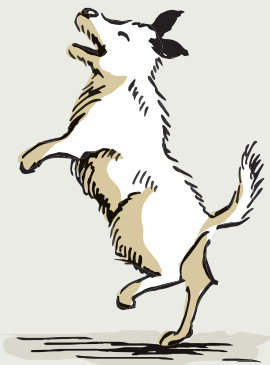
WELLS-NEXT-THE-SEA

The Globe Inn

Overlooking a pretty, leafy Georgian square in the bustling seaside town of Wells-next-the-Sea, The Globe Inn is perfectly placed for an adventure on the beautiful North Norfolk coast.

www.theglobeatwells.co.uk 01328 710206

The Buttlands, Wells-Next-The-Sea,
Norfolk, NR23 1EU



DISCOVER MORE OF OUR FANTASTIC
COUNTRY AND COASTAL INNS AT:

www.chestnutgroup.co.uk